



INDOFINE Chemical Company, Inc.

121 Stryker Lane, Bldg. 30, Suite 1 • Hillsborough, NJ 08844 • U.S.A.

Phone: (908) 359-6778 • FAX: (908) 359-1179

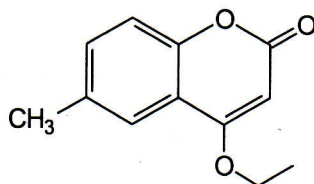
website: www.indofinechemical.com

e-mail: chemical@indofinechemical.com

CERTIFICATE OF ANALYSIS

Cat No.: 19-332

<u>Product:</u>	4-ETHOXY-6-METHYLCOUMARIN
<u>Lot Number:</u>	0008237
<u>Molecular Formula:</u>	C ₁₂ H ₁₂ O ₃
<u>M.W.:</u>	204.22
<u>Melting Point:</u>	142-145°C
<u>Appearance:</u>	White powder
<u>Solubility:</u>	Soluble in Chloroform
<u>T.L.C.:</u>	Hexane:Ethyl acetate (1:1)
<u>Purity(HPLC):</u>	99.80%





INDOFINE Chemical Company, Inc.

121 Stryker Lane, Bldg. 30, Suite 1 • Hillsborough, NJ 08844 • U.S.A.

Phone: (908) 359-6778 • FAX: (908) 359-1179

website: www.indofinechemical.com

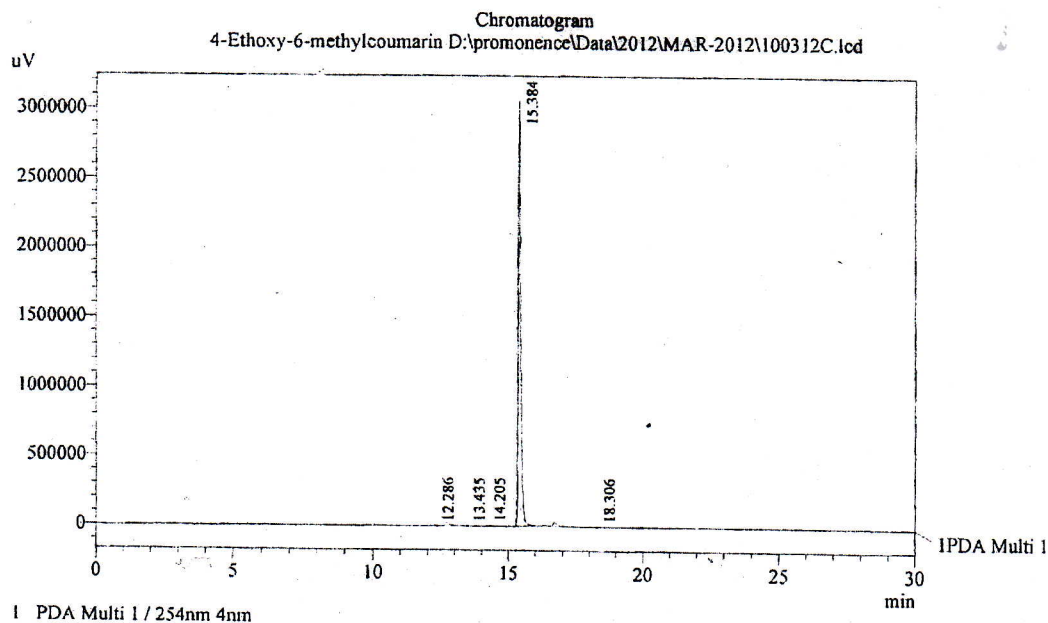
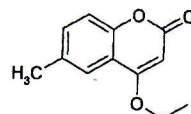
e-mail: chemical@indofinechemical.com

HPLC ANALYSIS

Acquired by : Sanjeev
Sample Name : 4-Ethoxy-6-methylcoumarin
Sample ID : Lot No:-0008237
Injection Volume : 20 uL
Data Filename : 100312C.lcd
Method Filename : Linear Gradient.M.lcm

Catalog No.: 19-332
Product name: 4-Ethoxy-6-methylcoumarin
Lot No.: 0008237

Date Acquired : 3/10/2012 12:12:10 PM
Data Processed : 3/10/2012 12:51:25 PM
Column : LUNA C-18(2), (250mm x4.6mm 5.0µ)
Flow : 1.000 mL/min.
Mobile Phase : A(0.05% TFA in water) B(Acetonitrile)
0.01 90 10
12.0 10 90
20.0 10 90
25.0 90 10
30.0 90 10



PeakTable

Peak#	Name	Ret. Time	Area	Area %	Relative Retention Time
1	RT:12.286	12.286	2841	0.01	0.80
2	RT:13.435	13.435	2773	0.01	0.87
3	RT:14.205	14.205	14749	0.07	0.92
4	RT:15.384	15.384	20400818	99.80	1.00
5	RT:18.306	18.306	20281	0.10	1.19
Total			20441462	100.00	



INDOFINE Chemical Company, Inc.

121 Stryker Lane, Bldg. 30, Suite 1 • Hillsborough, NJ 08844 • U.S.A.

Phone: (908) 359-6778 • FAX: (908) 359-1179

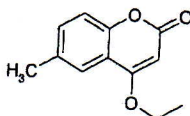
website: www.indofinechemical.com

e-mail: chemical@indofinechemical.com

Catalog No.: 19-332

Product name: 4-Ethoxy-6-methylcoumarin

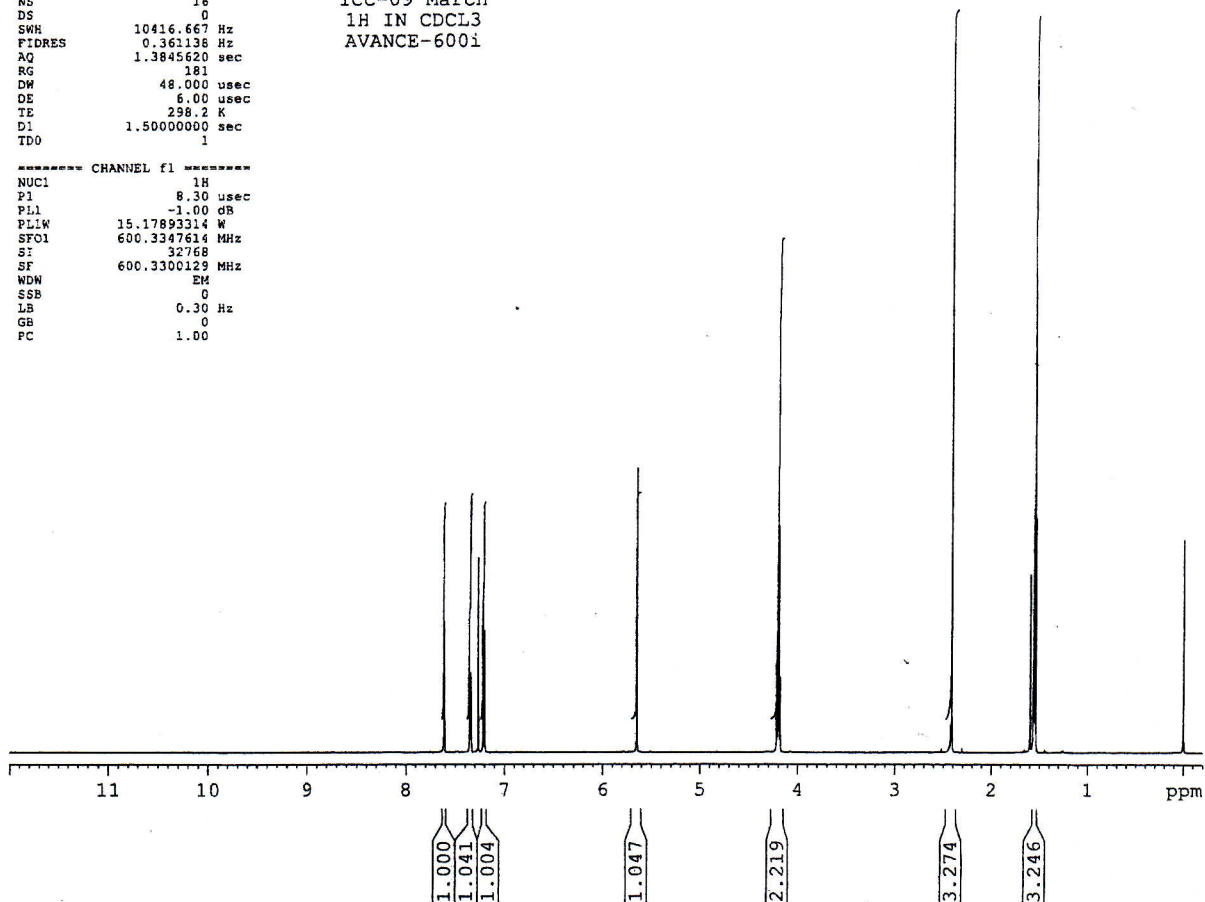
Lot No.: 0008237



SOLVENT CDCl3
NS 16
DS 0
SWH 10416.667 Hz
FIDRES 0.361138 Hz
AQ 1.3845620 sec
RG 181
DW 48.000 usec
DE 6.00 usec
TE 298.2 K
D1 1.50000000 sec
TDO 1

ICC-09 March
1H IN CDCL3
AVANCE-600i

----- CHANNEL f1 -----
NUC1 1H
P1 8.30 usec
PL1 -1.00 dB
PL1W 15.17893314 W
SFO1 600.3347614 MHz
SI 32768
SF 600.3300129 MHz
WDW EM
SSB 0
LB 0.30 Hz
GB 0
PC 1.00



ICC INDOFINE Chemical Company, Inc.

121 Stryker Lane, Bldg. 30, Suite 1 • Hillsborough, NJ 08844 • U.S.A.

Phone: (908) 359-6778 • FAX: (908) 359-1179

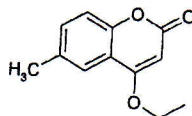
website: www.indofinechemical.com

e-mail: chemical@indofinechemical.com

Catalog No.: 19-332

Product name: 4-Ethoxy-6-methylcoumarin

Lot No.: 0008237



SOLVENT CDCl3
NS 16
DS 0
SWH 10416.667 Hz
FIDRES 0.361138 Hz
AQ 1.3845620 sec
RG 181
DW 48.000 usec
DE 6.00 usec
TE 298.2 K
D1 1.50000000 sec
TDO 1

ICC-09 March
1H IN CDCL3
AVANCE-600i

----- CHANNEL f1 -----
NUC1 1H
P1 8.30 usec
PL1 -1.00 dB
PL1W 15.17893314 W
SFO1 600.3347614 MHz
SI 32768
SF 600.3300129 MHz
WDW EM
SSB 0
LB 0.30 Hz
GB 0
PC 1.00

